

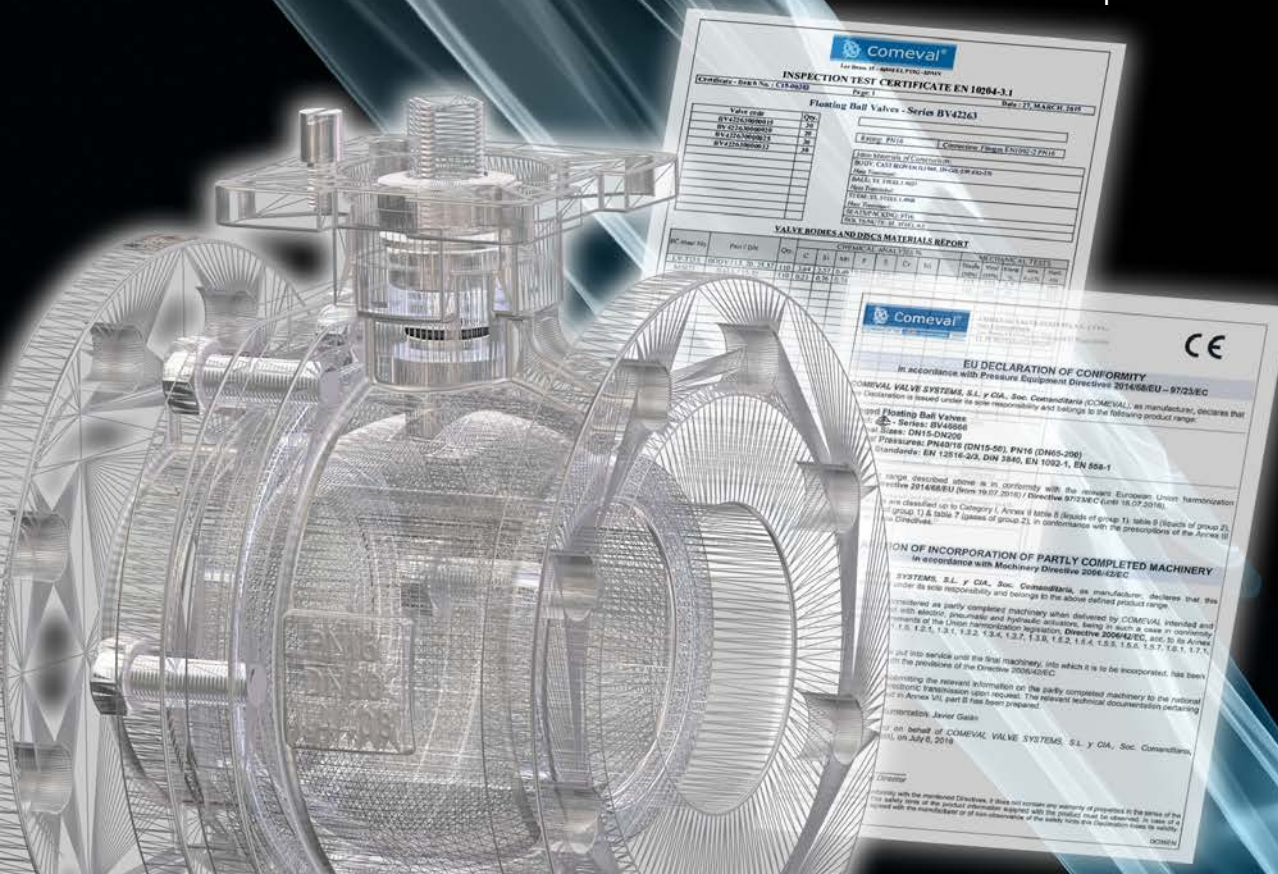
EN/DIN Ball Valves

Uniflow®



Why choosing the Uniflow® BV4-6666 Series Ball Valves

- Floating ball, full bore, split body design, integral flanges, construction in stainless steel
- Precision machined components, for optimal valve performance
- Reliable seat seal, elastic sealing ring can transform elastically to undertake the bigger force pushed by the medium without any damage
- Fire Safe design. Certified tests to API 6FA – API 607 on request
- Low valve surface porosity and roughness, thanks to lost wax casting technology, better aesthetic and less prone to corrosion attack
- Strictly compliant with legal regulations, safety and reliability.
- Stringent QC and traceability of materials.
- Large availability of size ranges
- A customized range of Quality and compact range of pneumatic and electric actuators.
- Large inventory of valves and actuators available in Spain



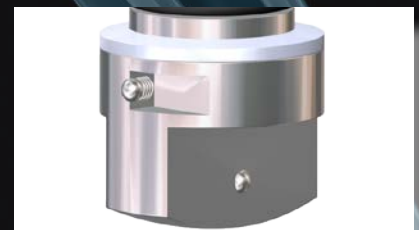
Valves designed and manufactured in compliance with PED 2014/68/EU – Module A – Cat. I and also in compliance with Machinery Directive 2006/42/EC



Marking according to EN19, with name plate including CE marking, valve identification and batch number for full traceability purpose



Simple but efficient locking device for make sure no unauthorized person can open or close the valve without consent.



Double anti-static device for applications in Ex-atmosphere zone 1, 2, 21 & 22

Uniflow® - A comprehensive portfolio of Floating Ball valves for Water, HVAC, Lubrication, Gases, Compressed air and Process

Series BV46666 Ball Valves

DN 15/200 – Flanged to EN 1092-1 type 21, PN16 – ISO 5211 Marking EN 19 – Pressure Tests: EN 12266-1 – Fire Safe Design

Materials of Construction Body and Ball: Stainless steel 1.4408

Materials of seat liner: PTFE (option TFM1600)

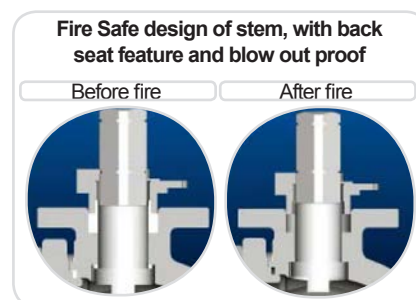
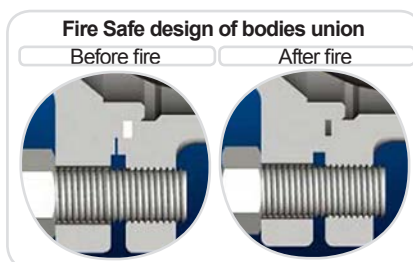
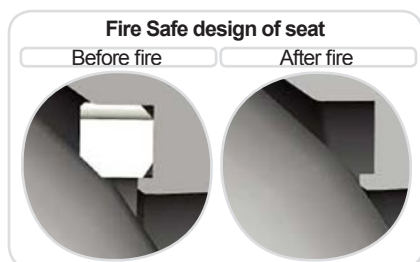
Actuation: Lever, Worm Gear , Actuators

Options:

- Silicone free and oxygen service execution
- Limit switches
- Extended spindle



Fire safe design features



Live loaded stem packing, belleville washers automatically adjusting for thermal effects. O-ring safety shaft sealing, ensure atmospheric tightness with liquids and gases

Direct mounting pad with top flange and square stem with bevelled edges acc. to ISO 5211 to suit actuators.

Mirror polished st. steel ball, solid type up to DN100. Reduced operating torque and full seat tightness

Options in actuation devices and stem extensions



Worm gear optional actuation device



Control accessories: limit switch boxes, solenoids and others



Stem extension

Automation and design enhancements:

Series CMVL Actuators

Series CMVL T Series Quarter Turn Pneumatic Actuator



- ISO 5211 / DIN 3337
- Rack and Pinion type
- Visual indicator
- Extruded aluminum shell
- Corrosion resistance spring cartridges
- Anti-blow out system of pinion
- Diverse design options

Series CMVL L/H Series Quarter Turn Electric Actuator



- ISO 5211 / DIN 3337
- Emergency override hand wheel
- Visual indicator
- Electronic torque limiter
- Auto adjustable temperature control
- Free volt switch contacts
- PES protected electric supply
- Diverse design options

On site and Off site after market service



We provide engineering application on installation and pipework layout upon request. Our support also includes general arrangement drawings, fluid compatibility tables, Operating and Maintenance Instructions and Certificates

We assembly different actuator brands and styles acc. to customer's specifications

