

MECHANICAL STROKE COUNTERS POP-CT

DESCRIPTION

The ADCAMat POP-CT stroke counter is designed to monitor the operation of pressure operated pumps in open vented systems. The device is mechanical and operates by change in pressure inside the pump which it is connected to. It can be used to determine the amount of condensate return and establish maintenance intervals.

MAIN FEATURES

Robust construction.
7-digit mechanical display.
No power supply or battery requirement.

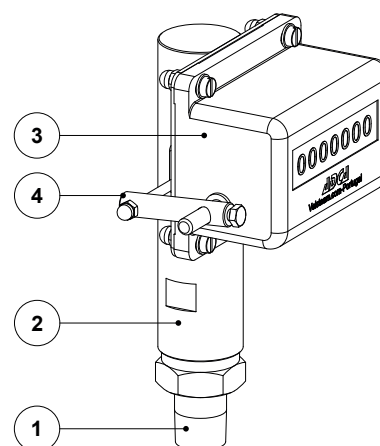
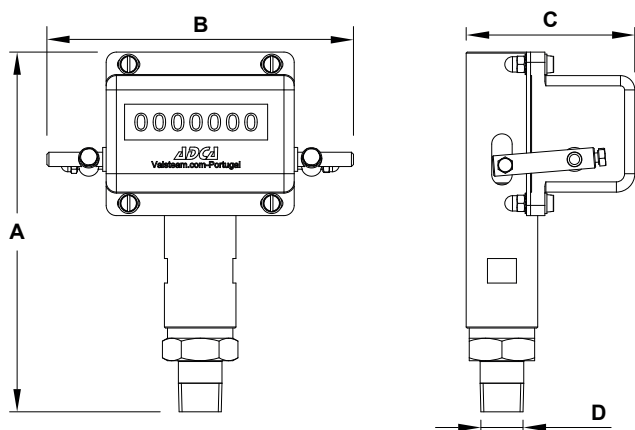
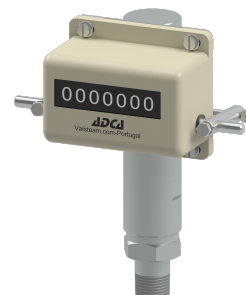
OPTIONS: Battery powered digital stroke counter.

USE: Monitoring or metering of pressure operated pumps.

AVAILABLE
MODELS: POP-CT.

CONNECTIONS: ISO 7 R or NPT.

INSTALLATION: Vertical installation, directly screwed onto the pump cover. See IMI – Installation and maintenance instructions.



| DIMENSIONS (mm) | | | | |
|-----------------|-----|-----|------|------|
| MODEL | A | B | C | D |
| POP-CT | 176 | 150 | 82,5 | 1/2" |

| MATERIALS | | |
|-----------|--------------|-------------------|
| POS. N° | DESIGNATION | MATERIAL |
| 1 | Connection | AISI 303 / 1.4305 |
| 2 | Body | Brass |
| 3 | Counter | Aluminium |
| 4 | Lever system | AISI 304 / 1.4301 |

| LIMITING CONDITIONS | |
|-------------------------------------------|------------|
| Maximum operating temperature | 185 °C |
| Maximum operating pressure | 10 bar |
| Minimum motive pressure (steam) | 4 bar |
| Minimum motive pressure (air or nitrogen) | 3 bar |
| Minimum system backpressure | 700 mbar * |

* The pump outlet check valve can be supplied with a stronger spring to compensate in case of lower backpressure. Consult manufacturer.