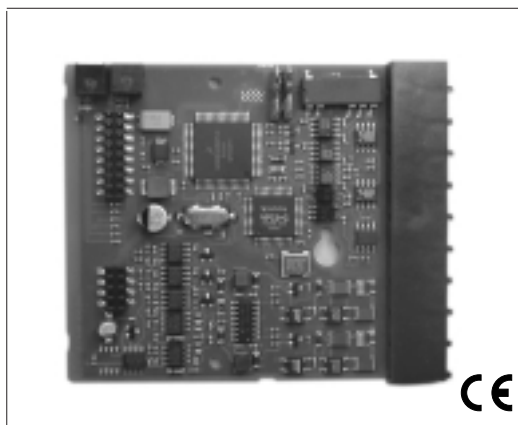


## Main characteristics

- Profibus DP Slave – Modbus RTU Master
- Network address from rotary switches
- Baud Rate autosynchronization
- Internal installation



## UPDATING INSTALLATION AND OPERATION MANUAL

code 80293 - 06/06 - ENGLISH

## PROFILE

The 2400-PROFI module can be installed inside 2400 products and expands communication by means of the PROFIBUS DP protocol.

The module is equipped with a port with PROFIBUS DP slave protocol, which is suitable for connection to a PROFIBUS Master.

The node address is assigned by means of the two rotary switches (1...99) on the product that houses the module or by means of a software message.

The network Master (typically a PLC) recognizes the slave node by means of this address.

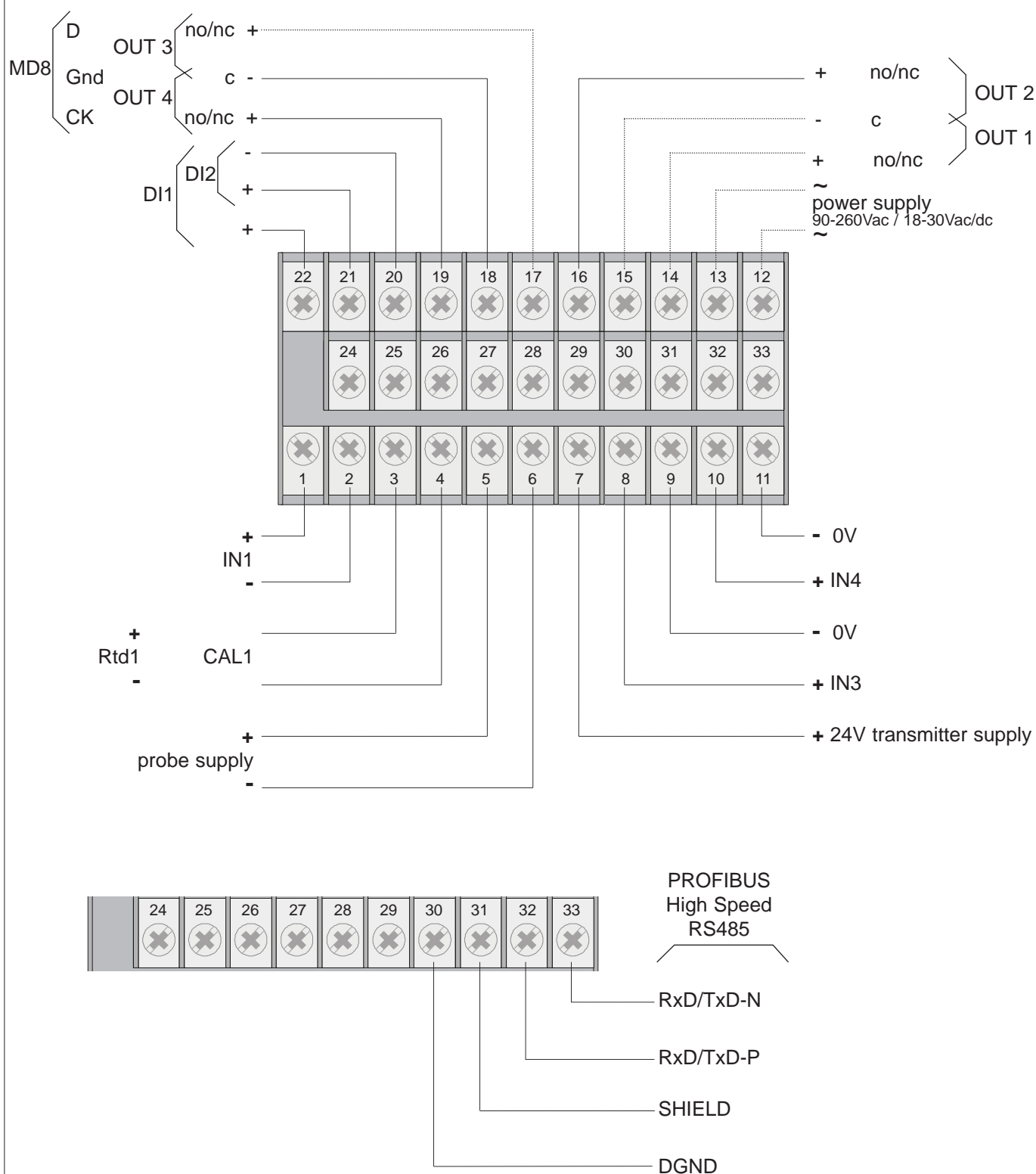
The slave node recognized by the Master consists of the 2400 that houses the module.

The expansion can be installed when the above-mentioned products are ordered or at a later date.

## TECHNICAL DATA

PROFIBUS port	
Protocol	Profibus DP V0 (slave)
Function	Connects 2400 to a Profibus DP Master device
Baud rate	Autosincronizzazione (9.6 ... 12000 kBit/s)
Connector	Faston on 2400 instrument
Address	HW: 1...99 set with rotary switches SW: 1...124 by means of specific sw message
I/O dimensions	39 bytes
Msg. supported	Data_Exchange, Slave_Diag, Set_Prm, Chk_Cfg, Get_Cfg, Global_Control, Set-Slave-Add
GSD file	25000A40.gsd
PROFIBUS diagnostics	
GREEN led	
Off	No communication with PROFIBUS Master
Flashing	1000msec = state "AUTOMATIC BAUDRATE RESEARCH"
"	250msec = state "WAIT FOR PARAMETRIZATION"
"	50msec = state "WAIT FOR CONFIGURATION"
On	Steady = "DATA EXCHANGE" state
YELLOW led	
Off	"DATA EXCHANGE" state
On	Steady = other operative states
RED led	
Off	No communication error
Flashing	1000msec = errore "State not possible"
"	250msec = errore "DP_State not possible"
"	50msec = errore "WD_State not possible"
On	Steady = board fault
General characteristics	
Dimensions	80x95x12mm (AxLxP)
Installation	Inside interment
Weight	35g
Power supply	+24V, 3VA max. taken directly from instrument
Working/storage temperature	0...50°C/-20...70°C
Relative humidity	20...85% RH non-condensing
Ambient conditions of use	Internal use, altitude up to 2000m
Installation	Inside module (see "INSTRUCTION AND WARNING")
Approvals and certifications	See 2400 instrument

## Electrical Connections (Mod. 2400 - 0 - x - x - P - x)



When making connections, always use wire appropriate to the voltage and current limits.

If the instrument has faston contacts, they must be protected and isolated.

If it has screw contacts, the wires must be attached at least in pairs

# Electrical Connections (Mod. 2400 - 1 - x - x - P - x)

