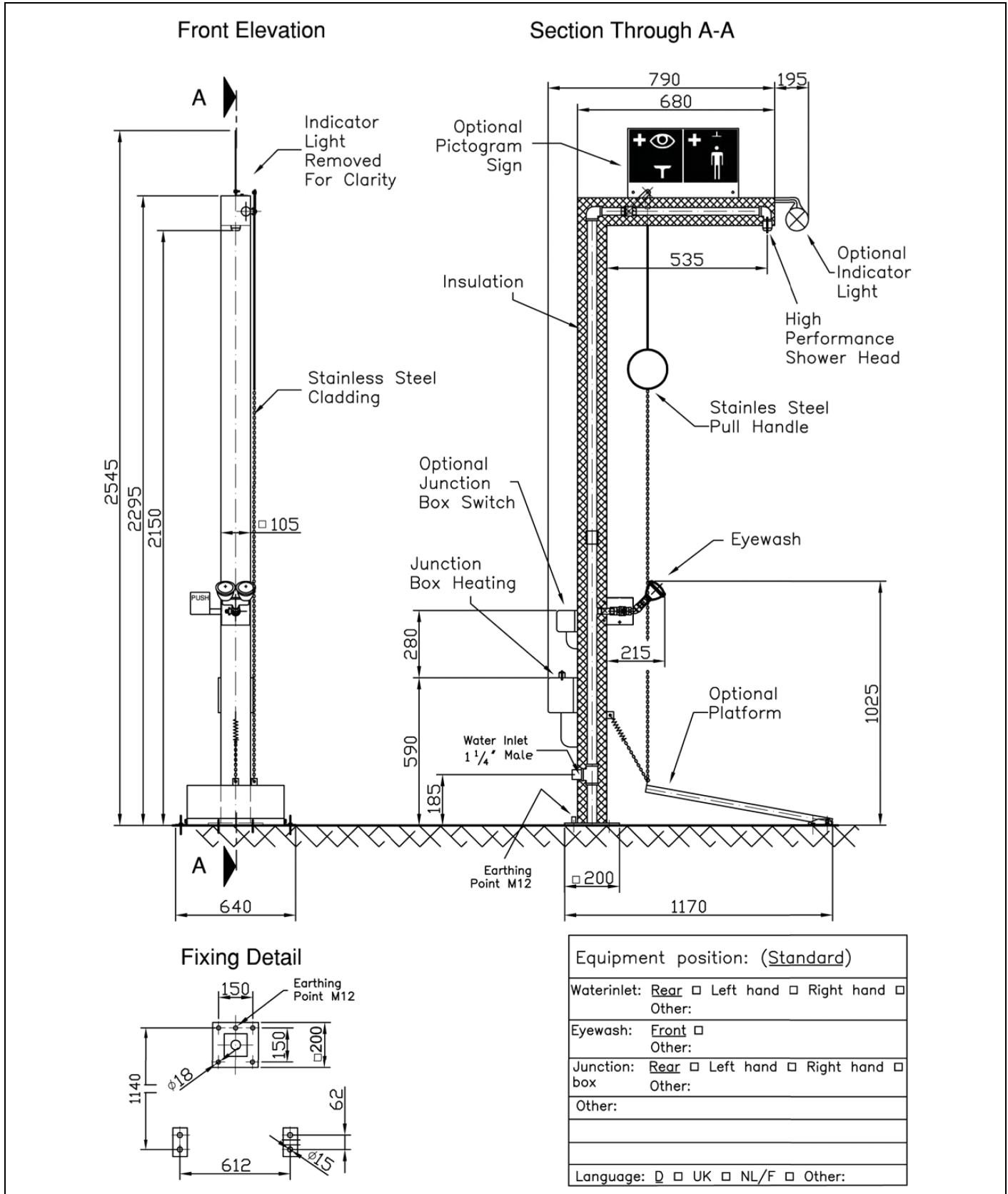


BR 816 095

**PremiumLine frostprotected heated body safety shower with eye shower,
floor mounted**



Technical description

PremiumLine frostprotected heated body safety shower with eye shower, floor mounted

- base plate with 4 mounting holes of stainless steel, dimensions 200 x 200 mm
- stand pipe 1 1/4" of stainless steel two-part, with bottom water inlet 1 1/4" female, total height 2300 mm
- connection pipe 3/4" of stainless steel, length 75 mm
- ball valve 1 1/4" of stainless steel, with pull rod actuation, DIN-DVGW tested and certificated
- pull rod with ring handle of stainless steel, length 700 mm
- wall shower arm 1 1/4" of stainless steel, projection 600 mm
- high-performance shower head of chemical resistant plastics, black, with improved spray pattern, corrosion resistant, largely calcification- and maintenance-free, very robust, self-draining
- insulation made of mineral wool shape package, non-flammable, according to DIN 4102
- heating by self-regulating trace tape, output 10 W/m, electrical supply 230 V - 50 Hz
- outdoor thermostat and power-saving-circuit (shutdown of trace tape at 11°C, switch on at 4°C)
- outer casing of the shower made of screwed stainless steel housing, easy to dismantle for maintenance work, including green/white indicator strips for better visibility of the shower
- sign for body safety shower according to EN ISO 7010 und ASR A1.3, self-adhesive PVC-film, 150 x 150 mm, viewing distance 15 meter
- integrated PremiumLine safety eye shower with two spray heads 45°, mounting height 950 mm, orientation of eye shower freely selectable on site
- connection pipe of stainless steel for easy installation and alignment of the shower, polished
- integrated flow regulation 14 litre / minute for a standard-compliant jet pattern at a specified working range of 1 to 5 bar flow pressure
- ball valve 1/2" of stainless steel, with PUSH-lever actuation, DIN-DVGW tested and certificated
- big push plate made of stainless steel, polished, length 130 mm, with large signal "PUSH", luminescent according to DIN 67510
- high-performance spray heads made of stainless steel for large-scale dispersion of water, with plastic spray plate, largely free of calcification, with rubber sleeves and sealed dust caps with folding mechanism, mounted over distributor fork
- sign for eye shower according to EN ISO 7010 und ASR A1.3, self-adhesive PVC-film, 100 x 100 mm, viewing distance 10 meter
- suitable for use in EX-Zones 1 & 2, all electrical parts explosion-proof, with risk assessment in accordance with industrial safety regulations concerning the non-electrical and electrical explosion protection
- according to BGI/GUV-I 850-0, DIN 1988 and EN 1717
- according to ANSI Z358.1-2014, EN 15154-1:2006, EN 15154-2:2006 and EN 15154-5:2019
- DIN-DVGW tested and certificated

Manufacturer: B-SAFETY or equal
Article-No.: BR 816 095

Technical specifications

Minimum flow pressure:	2.0 bar
Operating pressure:	2 to 5 bar
Flow rate body shower:	50 l/min
Flow rate eye shower:	14 l/min
Water inlet:	1 1/4" male
Electrical supply:	230 V - 50 Hz

Compliance with standards

- EN 15154-1:2006
- EN 15154-2:2006
- EN 15154-5:2019
- ANSI Z358.1-2014

Approvals

- DIN-DVGW, DVGW, NW-0416CL0425
- DIN-DVGW, DVGW, NW-0417CL0263
- GOST-R, Zertifikats-Nr. 0615463
- GOST-TR-EX, Zertifikats-Nr. 0338358



Product overview	
BR 816 095	PremiumLine frostprotected heated body safety shower with eye shower - flow rate 50 l/min (hazard class I according to EN 15154-5:2019)
BR 816 095 / 110L	PremiumLine frostprotected heated body safety shower with eye shower - flow rate 110 l/min (hazard class III according to EN 15154-5:2019)

Possible Options	Technical Specifications	EX-Model	
BR 818 100	Safety sign "Eye Shower and Safety Shower", incl. fastening for mounting on the shower arm. Material: PVC Dimensions: 320 x 180 mm	N/A	<input type="checkbox"/>
BR 818 200	Platform actuation for eye showers and safety showers, in addition to the standard actuation. Material: GFK, Stainless Steel	N/A	<input type="checkbox"/>
BR 870 205	Platform actuation for eye showers and safety showers, in addition to the standard actuation. Material: Stainless Steel	N/A	<input type="checkbox"/>
BR 870 350	Foot lever actuation for eye showers and safety showers. Material: Stainless Steel	N/A	<input type="checkbox"/>
BR 870 400	Switch for body safety shower alarm, complete pre-assembled on shower. Material: Plastic	EX-Zones 1 & 2	<input type="checkbox"/>
BR 870 450	Switch for eye shower alarm, complete pre-assembled on shower. Material: Plastic	EX-Zones 1 & 2	<input type="checkbox"/>
BR 830 700	Catch basin of stainless steel, with a GRP step grate for eye showers and safety showers. Material: Stainless steel, GRP Water outlet: 1 1/4" male Dimensions: 1100 x 1100 x 150 mm	N/A	<input type="checkbox"/>
BR 830 900	Housing for safety showers with a stainless steel frame and aluminum composite panel side walls. Material: Stainless steel, aluminum Dimensions: 2450 x 1100 x 1100 mm	N/A	<input type="checkbox"/>
BR 830 905	Housing for safety showers with a stainless steel frame and stainless steel side walls. Material: Stainless steel Dimensions: 2450 x 1100 x 1100 mm	N/A	<input type="checkbox"/>
BR 830 950	Maintenance ball valve for safety showers with removable trigger lever. Material: Stainless steel AISI 316 Water inlet: 1 1/4" female	N/A	<input type="checkbox"/>
BR 818 500	Position luminaire for safety showers, incl. mounting for shower arm, connected to the junction box, green. Electrical supply: 230V-50Hz	No	<input type="checkbox"/>
BR 818 500 EX	Position luminaire for safety showers, incl. mounting for shower arm, connected to the junction box, EX, green. Electrical supply: 230V-50Hz	EX-Zones 1 & 2	<input type="checkbox"/>
BR 870 550	Flashlight-Siren for safety showers, incl. mounting for shower arm, connected to the junction box, xenon red. The release switch and electrical consumer must be connected by the customer using an intermediate relay/contactator. Electrical supply: 230V-50Hz	No	<input type="checkbox"/>
BR 870 550 EX	Flashlight for safety showers, incl. mounting for shower arm, connected to the junction box, EX, xenon red. The release switch and electrical consumer must be connected by the customer using an intermediate relay/contactator. Electrical supply: 230V-50Hz	EX-Zones 1 & 2	<input type="checkbox"/>
BR 870 600	Siren for safety showers, incl. mounting for shower arm, connected to the junction box. The release switch and electrical consumer must be connected by the customer using an intermediate relay/contactator. Electrical supply: 230V-50Hz	No	<input type="checkbox"/>
BR 870 600 EX	Siren for safety showers, incl. mounting for shower arm, connected to the junction box. Electrical supply: 230V-50Hz	EX-Zones 1 & 2	<input type="checkbox"/>

www.b-safety.com

The release switch and electrical consumer
must be connected by the customer using an
intermediate relay/contactator.

