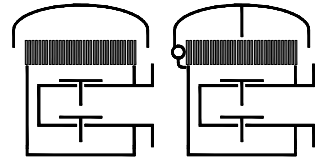


## Type sheet

Deflagration and endurance burning  
proof pressure and vacuum relief valve

**KITO® VD/KL-1-IIA-.../-A**

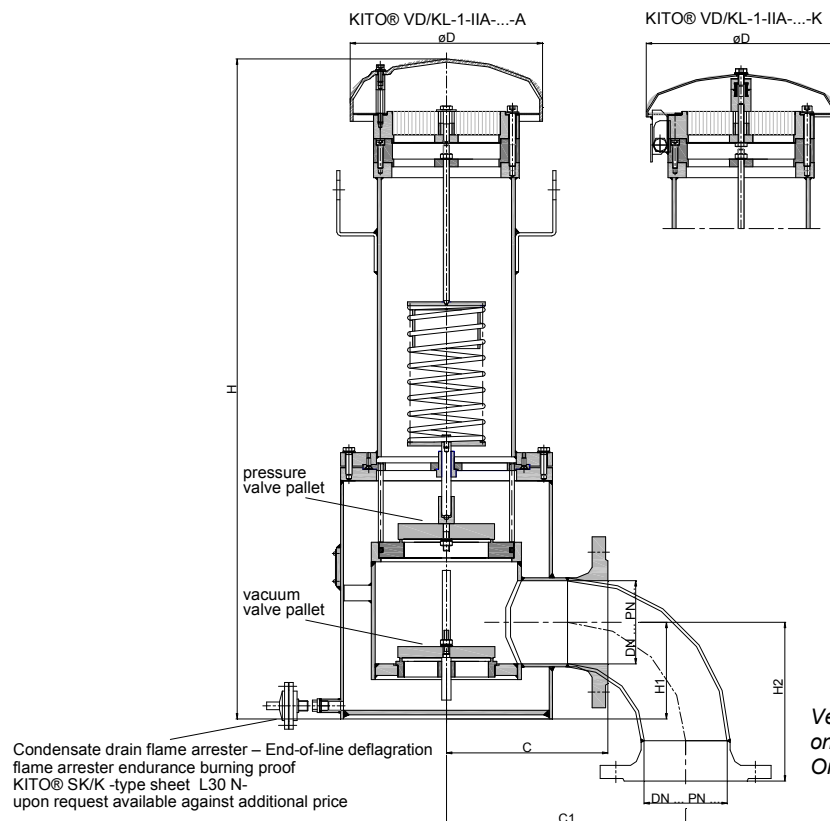
**KITO® VD/KL-1-IIA-.../-K**



## Application

As end-of-line armature, for venting apertures on tank installations, valve is explosion-proof and endurance-burning proof for certain inflammable liquids. Used mainly as venting and breather device for fixed roof tanks to prevent inadmissible pressure and vacuum and to minimize unwelcome gas losses and inadmissible emissions. Approved for all materials of the explosion group IIA with a maximum experimental safe gap (MESG) > 0.9 and an maximum operating temperature of 60 °C. The housing is mounted perpendicularly on a tank roof. If required by the customer, the valve is equipped with an explosion-proof condensate drain device.

## Dimensions (mm)



Vertical connection in size DN 100  
only after prior agreement!!!  
On-site support of the device necessary!!!

DN		D	H	H1	H2		C	C1	kg
DIN	ASME				DIN	ASME			
50 PN 16	2"	248	552	77	121	140	155	174	35
80 PN 16	3"	248	645	105	165	184	180	200	50
100 PN 16	4"	248	850	124	204	228	190	190	64

Indicated weights are understood without weight load and refer to the standard design

Attention !!! Dimension H for design with a weather hood from stainless steel 1.4571 ca. 10-15 mm lower

## Example for order

**KITO® VD/KL-1-IIA-1-50/25-A (vertical)**

(design with vertical flange connection DN 50 PN 16, weather hood from PMMA, vacuum valve pallet DN 50 and pressure valve pallet DN 25)

**Type examination certificate to EN ISO 16852 and C marking in accordance to ATEX-Directive 2014/34/EU**

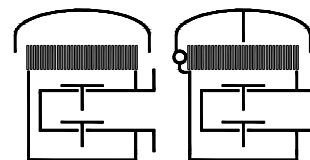
page 1 of 2

## Type sheet

Deflagration and endurance burning  
proof pressure and vacuum relief valve

**KITO® VD/KL-1-IIA-.../...-A**

**KITO® VD/KL-1-IIA-.../...-K**



### Design

	standard	optionally
housing	steel	stainless steel mat. no. 1.4571
valve seat, valve spindle	stainless steel mat. no. 1.4571	
valve seat seal (o-ring)	VMQ-FEP	Viton, NBR, VMQ-PFA
load weight	stainless steel mat. no. 1.4571	
valve sealing	metal sealing	
valve pallet (pressure)	spring loaded	
valve pallet (vacuum)	weight loaded	
spring loaded parts	stainless steel mat. no. 1.4571	
compression spring	stainless steel	
KITO®-flame arrester element	completely interchangeable	
KITO®-casing / KITO®-grid	stainless steel mat. no. 1.4308 / 1.4310	stainless steel mat. no. 1.4408 / 1.4571
weather hood <b>KITO® VD/KL-1-IIA-...-A</b>	PMMA	
weather hood <b>KITO® VD/KL-1-IIA-...-K</b>	stainless steel mat. no. 1.4571, hood can fold automatically as a result of folding mechanism and fusing element	
protective screen	PA6	
flange connection	EN 1092-1 type B1	ASME B16.5 Class 150 RF
connection	lateral	vertical

### Settings (mbar)

DN	vacuum valve pallet			pressure valve pallet		
	size	min.	max.	size	min.	max.
50 PN 16	50/...	6	55	.../25	>200	350
				.../50		
80 PN 16	80/...	7	60	.../50		
				.../80		
100 PN 16	100/...	7	65	.../50		
				.../80		
				.../100		

The size of the vacuum valve pallet is always identical to the size of the flange connection.

The size of pressure valve pallet can be selected in accordance with required capacity!

Lower settings see KITO® VD/KL-IIA-...-... (type sheet E 14 N), higher settings on request.